

Essex Waste Partnership



WASTE STRATEGY

FOR ESSEX

2024 - 2054

Action Plan 2025

RETHINKING
OUR WASTE

Working together for Essex

Essex County Council,
Essex District, Borough
and City Councils

INTRODUCTION/BACKGROUND

The Waste Strategy for Essex describes how the Essex Waste Partnership will manage the waste that is produced by homes and businesses for the next 30 years.



The partnership is made up of the 12 district, borough and city councils in Essex and the county council. The partnership aims to ensure waste is managed in a cost-efficient and sustainable way.

The strategy commits the partnership to working together to minimise the impact that waste has on the environment.

OUR APPROACH

To deliver our vision, the partnership has identified the following priorities for Essex:

Move to a circular economy – where natural resources are used efficiently and products are designed to be durable, easy to repair and recyclable.

Apply the waste hierarchy – by designing services that prioritise waste reduction, reuse and recycling, and recovering energy and materials from waste that can't be recycled.

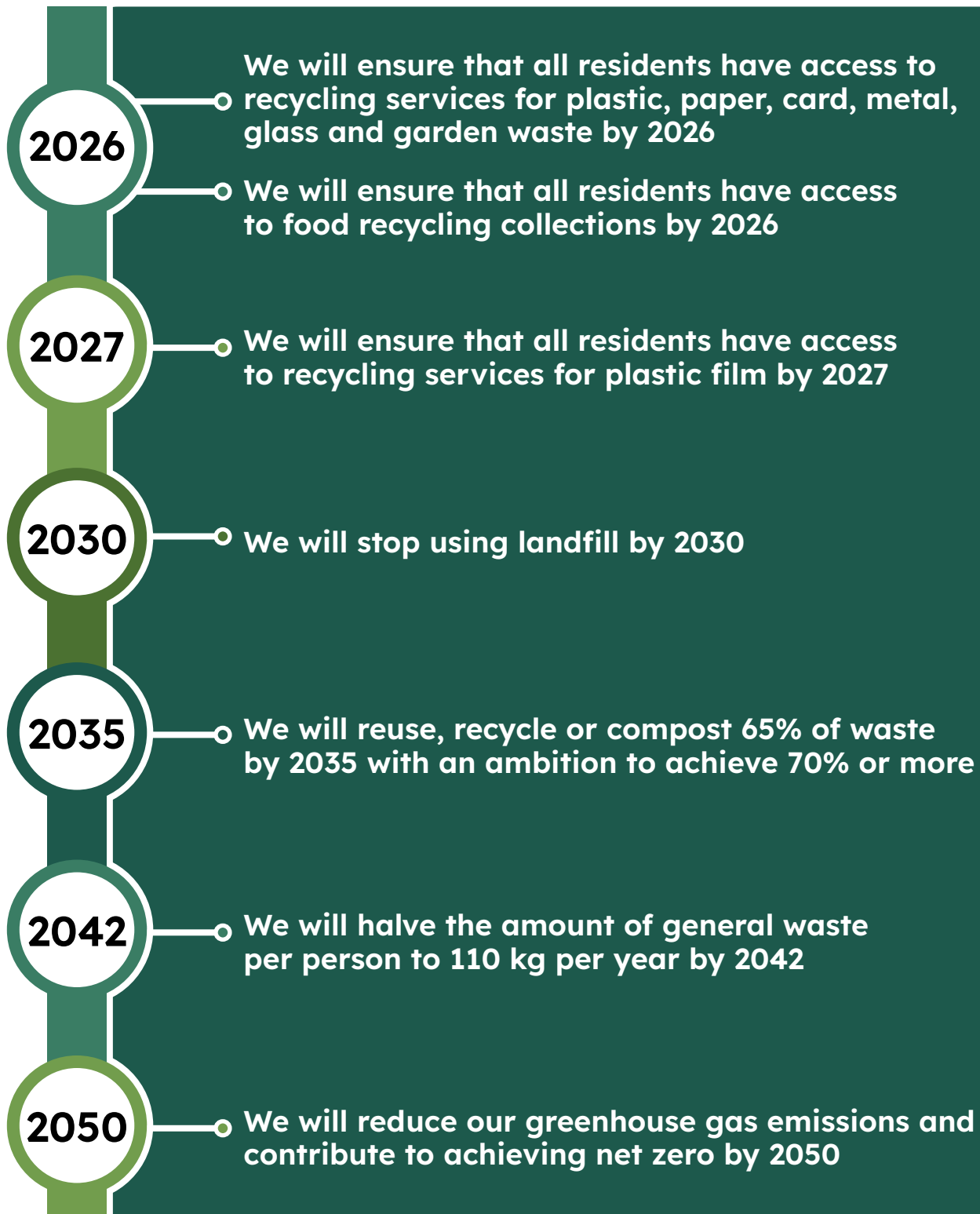
Collaborate and innovate – with each other and with government, businesses and communities to create a more sustainable waste system.

Educate and engage – by listening to feedback and delivering information and initiatives to support residents and businesses to reduce waste and recycle more.



OUR TARGETS AND AMBITIONS

The partnership is committed to achieving the government's national targets as a minimum standard, but we would like to go beyond these targets and have a bigger impact more quickly.

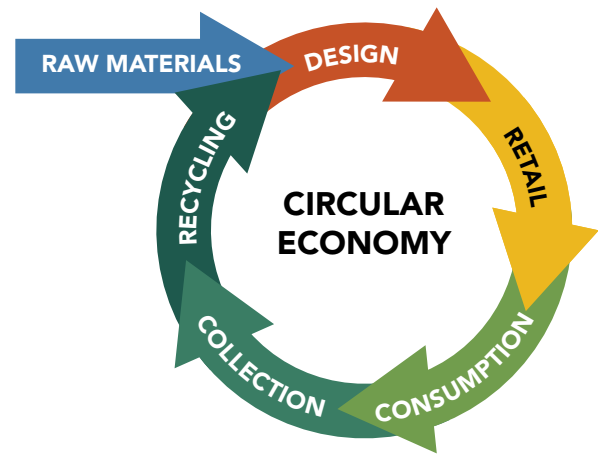


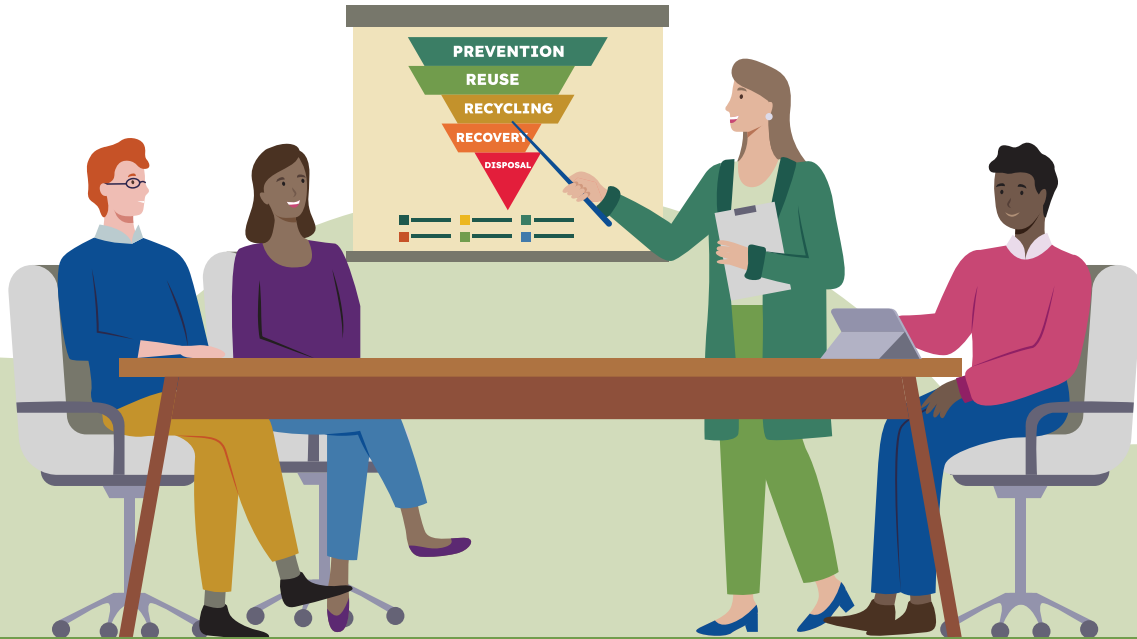
OUR PLANS FOR 2025

This action plan sets out what we will do in 2025 to help deliver the Waste Strategy for Essex. We know our targets are ambitious and we expect our progress towards achieving them to fluctuate and take time. Every year, we will publish our progress against the strategy as well as performance on how waste is managed and how much is recycled.

MOVE TO A CIRCULAR ECONOMY

- we will actively contribute to the development of the Government's Circular Economy Strategy
- we will connect, support and encourage businesses within Essex to move towards sustainable practices
- we will support partnership councils to apply circular economy principles when buying goods and services





APPLY THE WASTE HIERARCHY

Prevention

- we will implement new waste services to deliver waste reduction
- we will provide information and support to businesses to reduce waste

Reuse

- we will trial reuse services at recycling centres and maximise reuse of household items collected by partnership authorities
- we will provide micro-grants for community led reuse and repair initiatives
- we will develop a directory of services, organisations and groups that promote reuse

Recycling

- we will review recycling services to ensure we collect high quality material for recycling from all households
- we will make it easier for residents to recycle by collecting more types of waste for recycling from homes and at recycling centres
- we will support home composting by expanding the range of subsidised containers and providing online learning for residents
- we will support businesses to recycle their waste by providing new recycling collection services
- we will develop a directory of services and local collection points for recycling

Recovery

- we will stop using landfill by using Energy from Waste (EfW)

COLLABORATE AND INNOVATE

- we will explore the use of alternative fuels for our vehicles and equipment to reduce carbon emissions
- we will work together and with our suppliers to develop and improve employment and skills opportunities for Essex residents
- we will work together to deliver campaigns and interventions that reduce litter and incidents of fly-tipping



EDUCATE AND ENGAGE

- using research and insight we will deliver campaigns to help residents reduce, reuse and recycle their waste
- we will engage regularly with residents and communities to understand the barriers to waste prevention and recycling and use feedback when designing services
- we will focus education and engagement activities on the waste materials that have the biggest impact on the environment
- we will work with schools and young people to inspire life-long waste reduction behaviours by sharing materials for school leaders



Visit our [Waste Glossary](#) to find definitions of waste-related terms and phrases.

This information is issued by:
Essex County Council (on behalf of Essex Waste Partnership)
Recycling and Waste

Contact us:
wastestrategyforessex@essex.gov.uk
0345 743 0430

Environment and Climate Action
Essex County Council
County Hall, Chelmsford
Essex, CM1 1QH

 [Essex_CC](https://twitter.com/Essex_CC)
 facebook.com/essexcountycouncil

www.essex.gov.uk

The information contained in this document can be translated and/or made available in alternative formats, on request.

Published May 2025

WORKING TOGETHER FOR ESSEX

Basildon Council
BASILDON • BILLERICAY • WICKFORD

Braintree
District Council

BRENTWOOD
BOROUGH COUNCIL

castlepoint
benfleet | canvey | hadleigh | thundersley

Chelmsford
City Council

Colchester
City Council

Epping Forest
District Council

Essex County Council

Harlow
Council
Working together for Harlow

MALDON DISTRICT COUNCIL

Rochford
District Council

Tendring
District Council



UTTLESFORD DISTRICT COUNCIL
It's Our Community